

*Epidemiology of  
Sexually Transmitted Diseases (STD)  
Greater Hartford Ryan White TGA  
(GHRW TGA)  
(Hartford, Middlesex  
and Tolland  
Counties)*

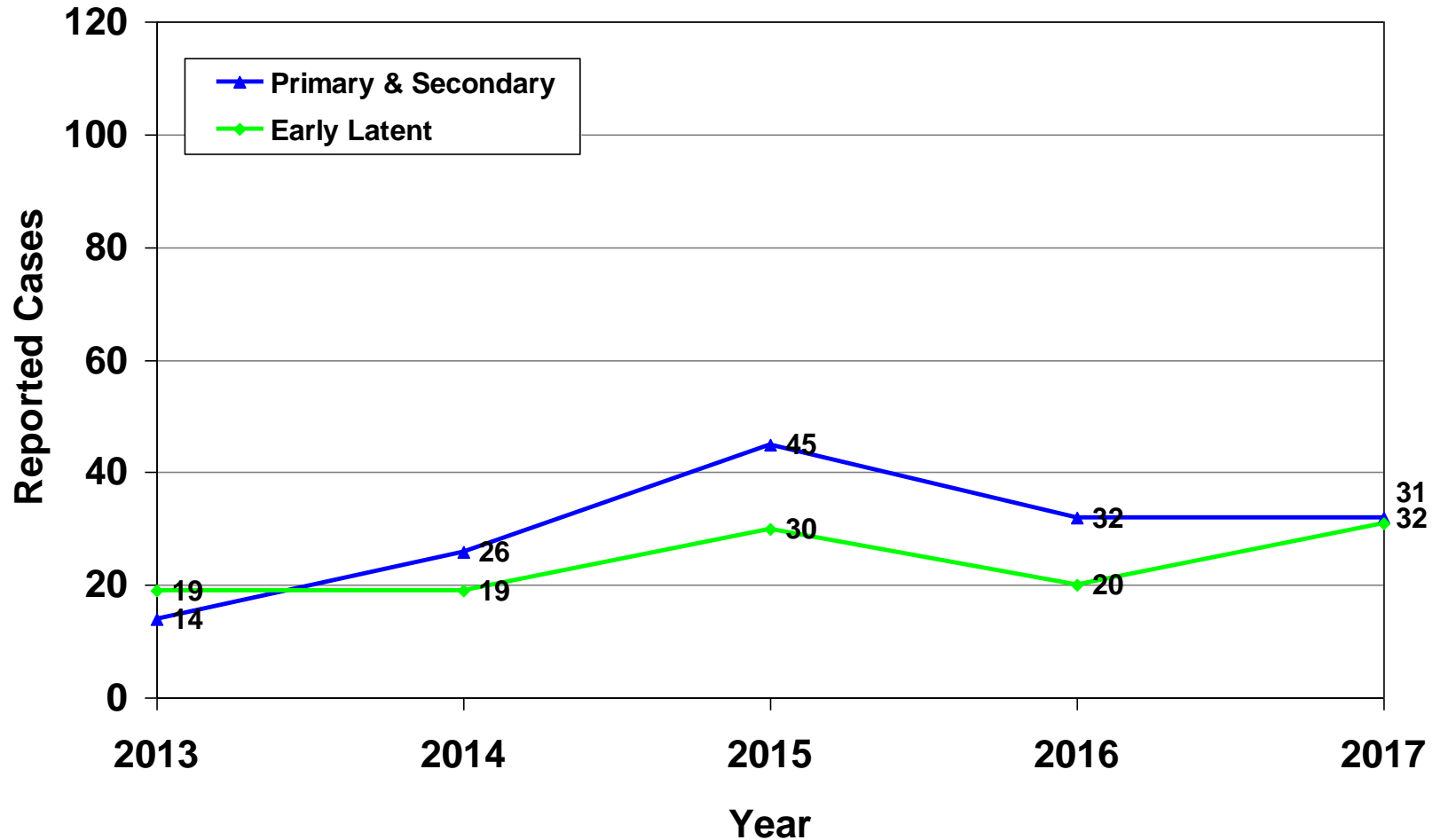
Connecticut Department of Public Health



# Early Syphilis Cases

## Primary/Secondary & Early Latent 2013–2017

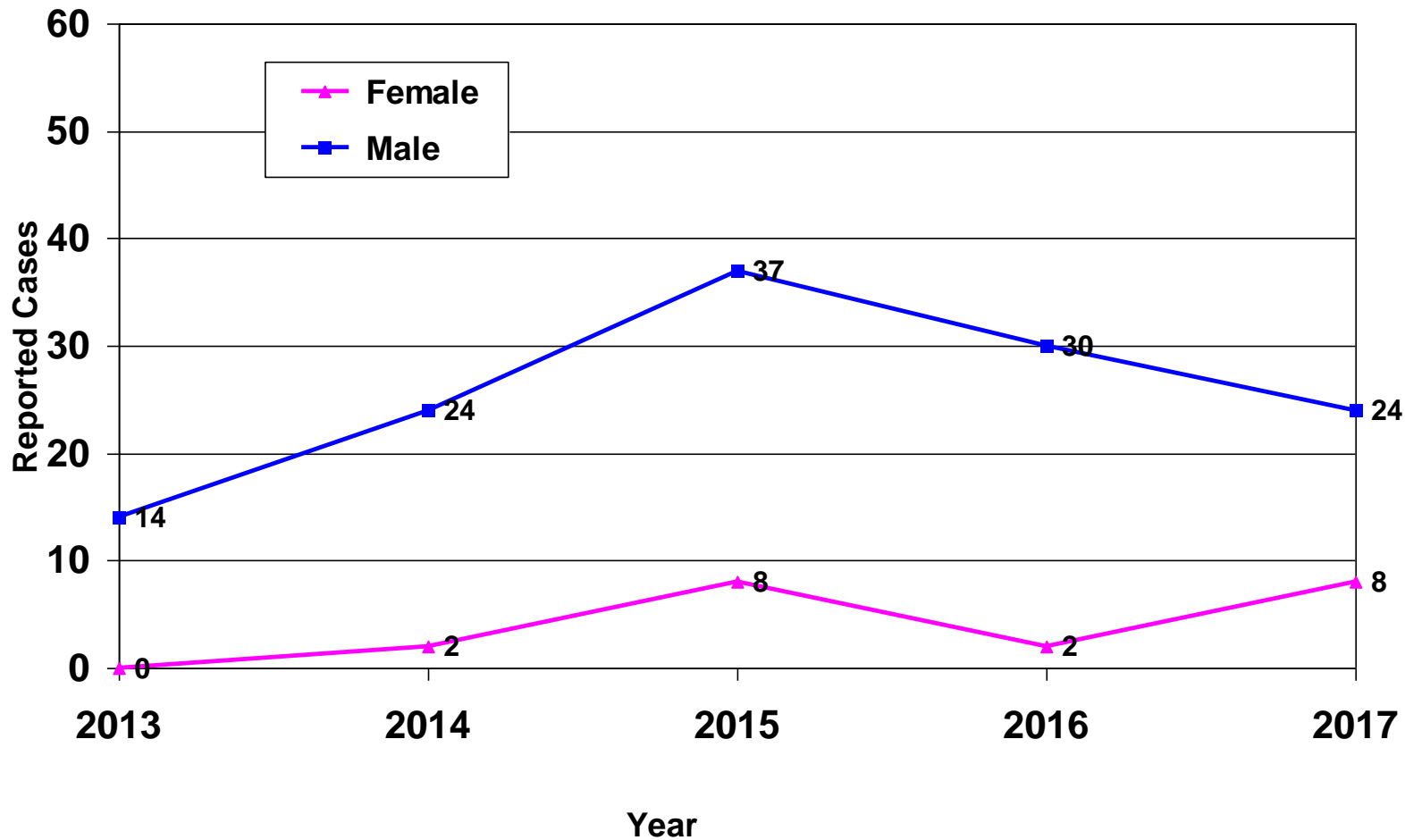
HARTFORD, MIDDLESEX AND TOLLAND COUNTIES



Source: CT STD Control Program

# Primary & Secondary Syphilis Cases By Sex, 2013–2017

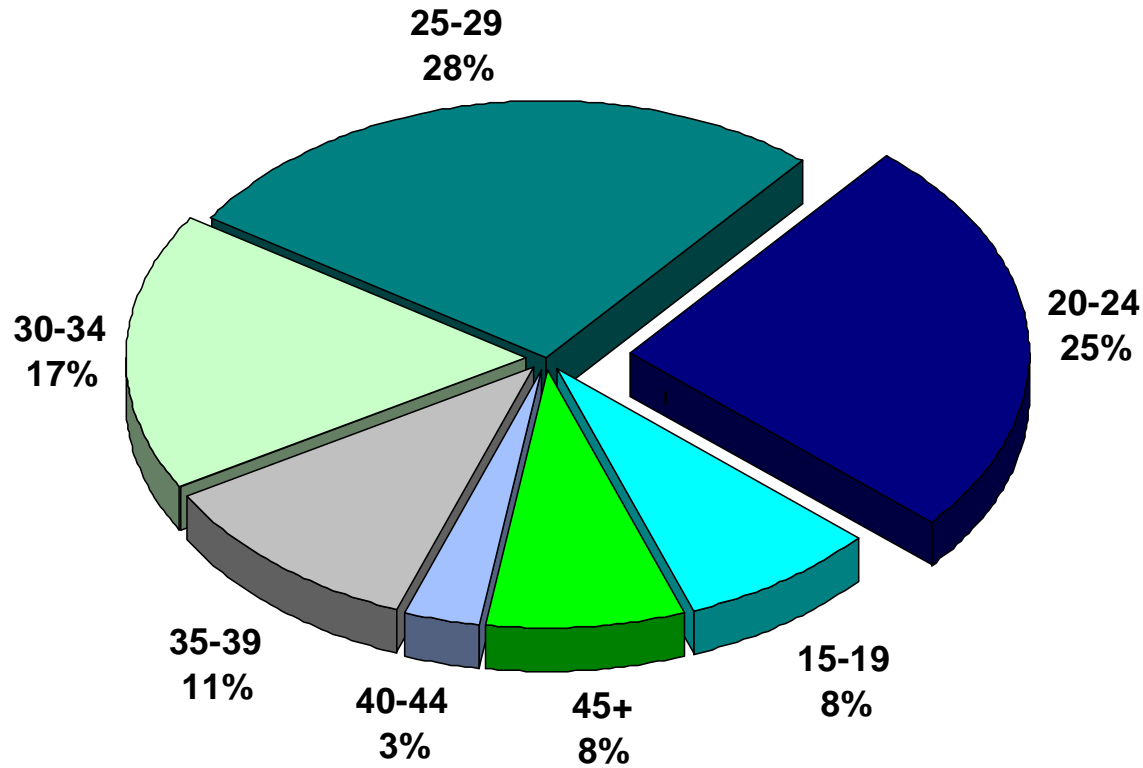
HARTFORD, MIDDLESEX AND TOLLAND COUNTIES



Source: CT STD Control Program

# Primary, Secondary & Early Syphilis Cases By Percent of Age Group, 2017

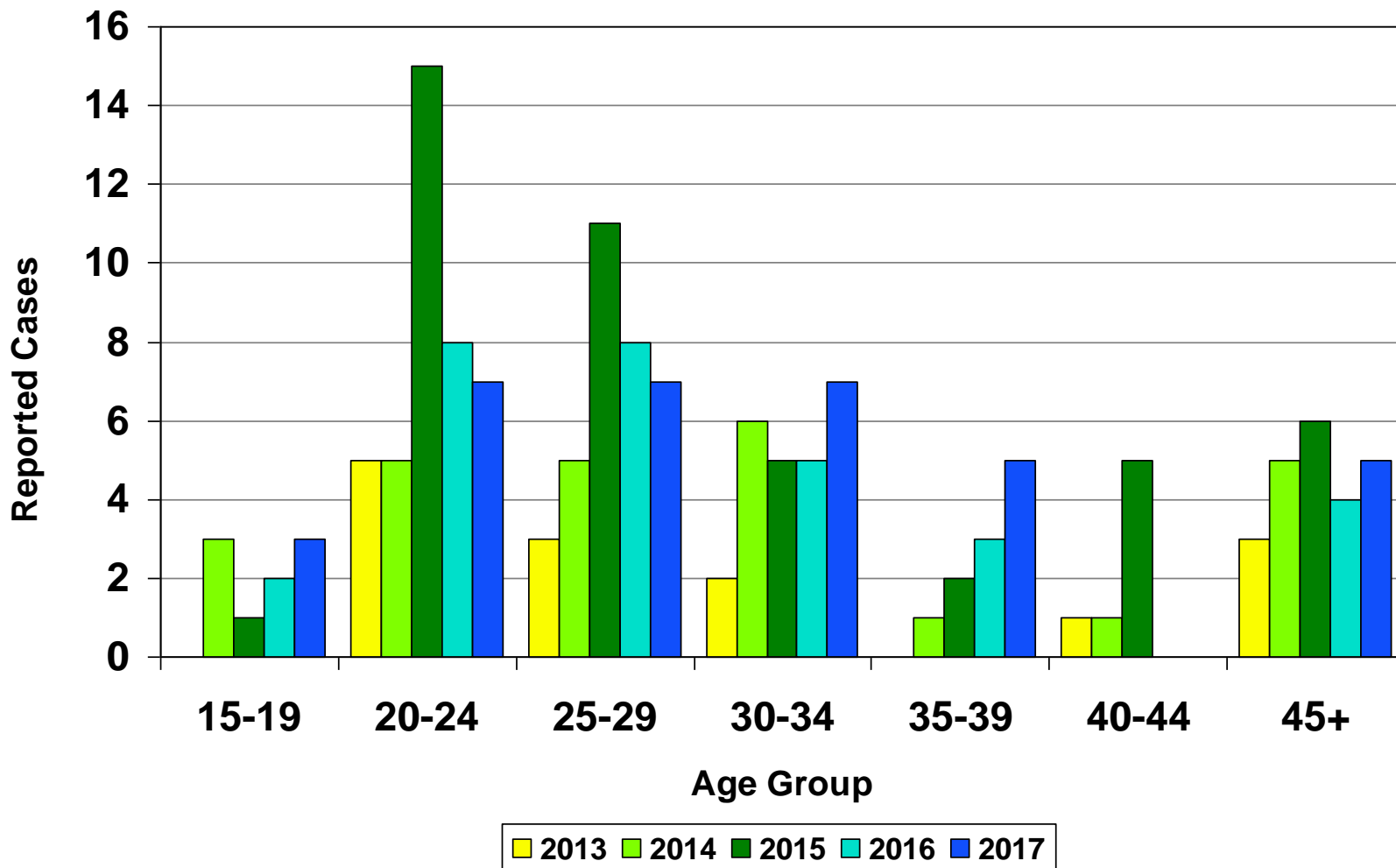
HARTFORD, MIDDLESEX AND TOLLAND COUNTIES



Source: CT STD Control Program

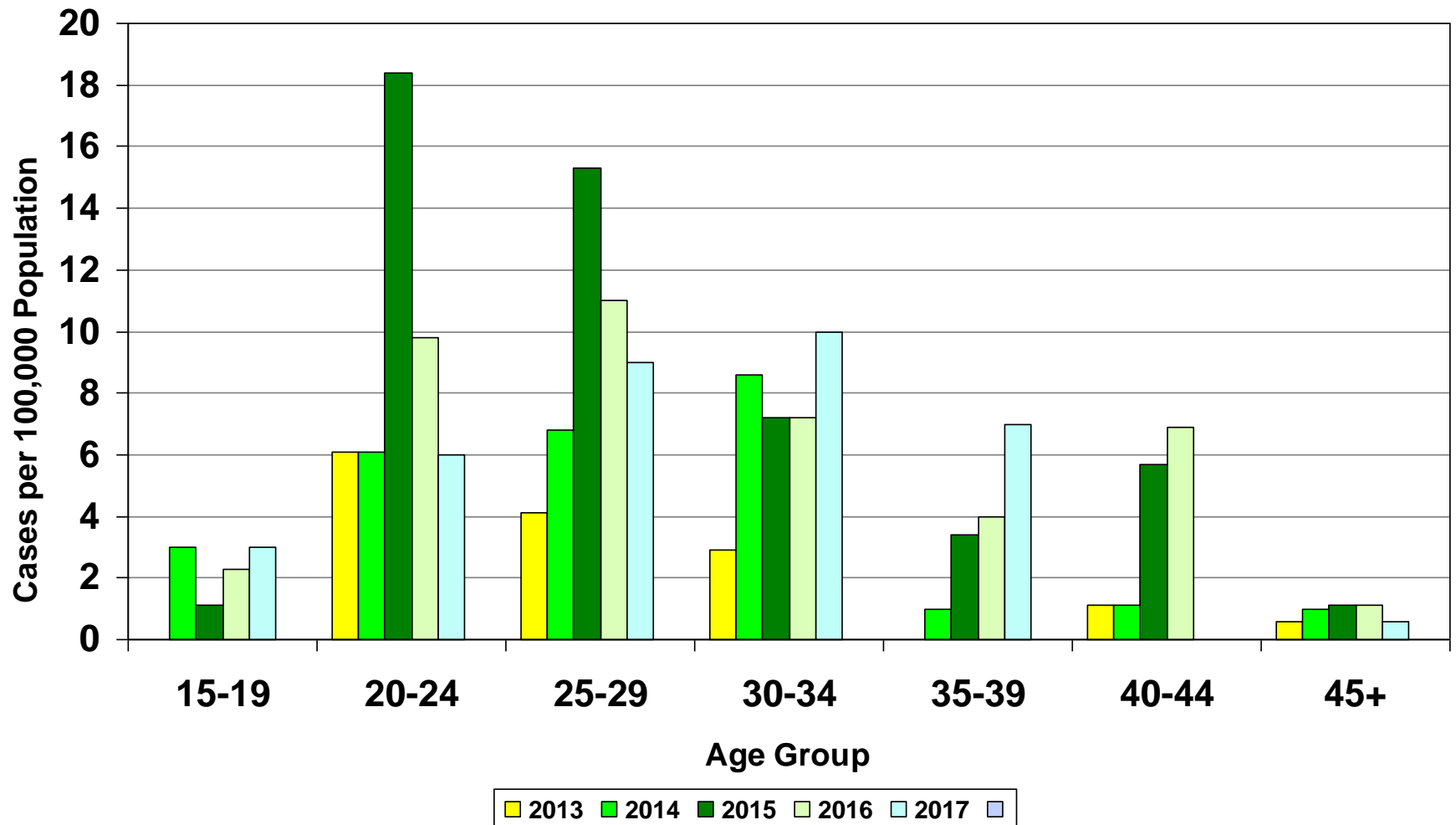
# Primary & Secondary Syphilis Cases By Selected Age Groups, 2013–2017

HARTFORD, MIDDLESEX AND TOLLAND COUNTIES



Source: CT STD Control Program

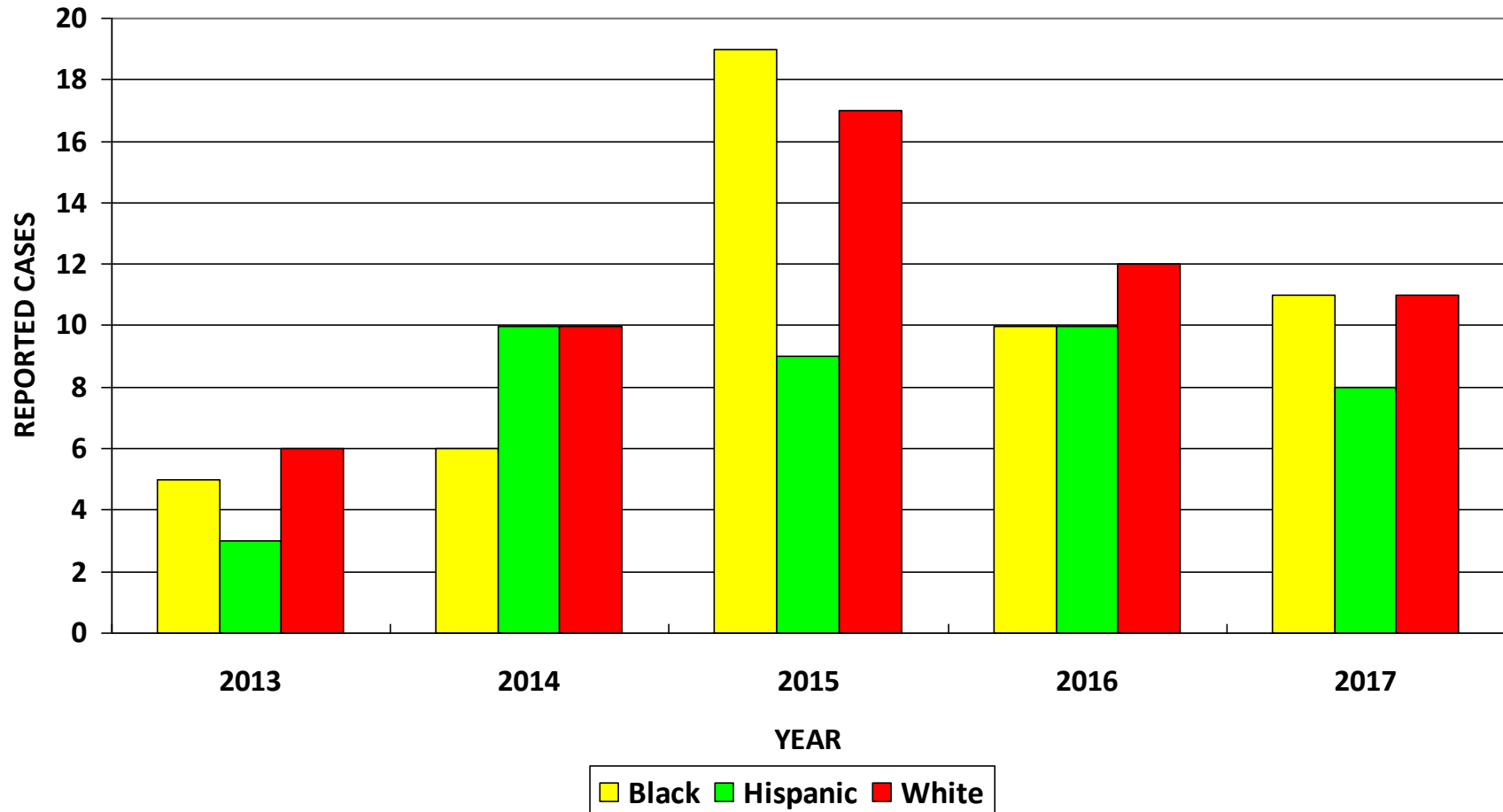
# Primary & Secondary Syphilis Case Rates FOR GHRW TGA By Selected Age Groups, 2013–2017



Source: CT STD Control Program

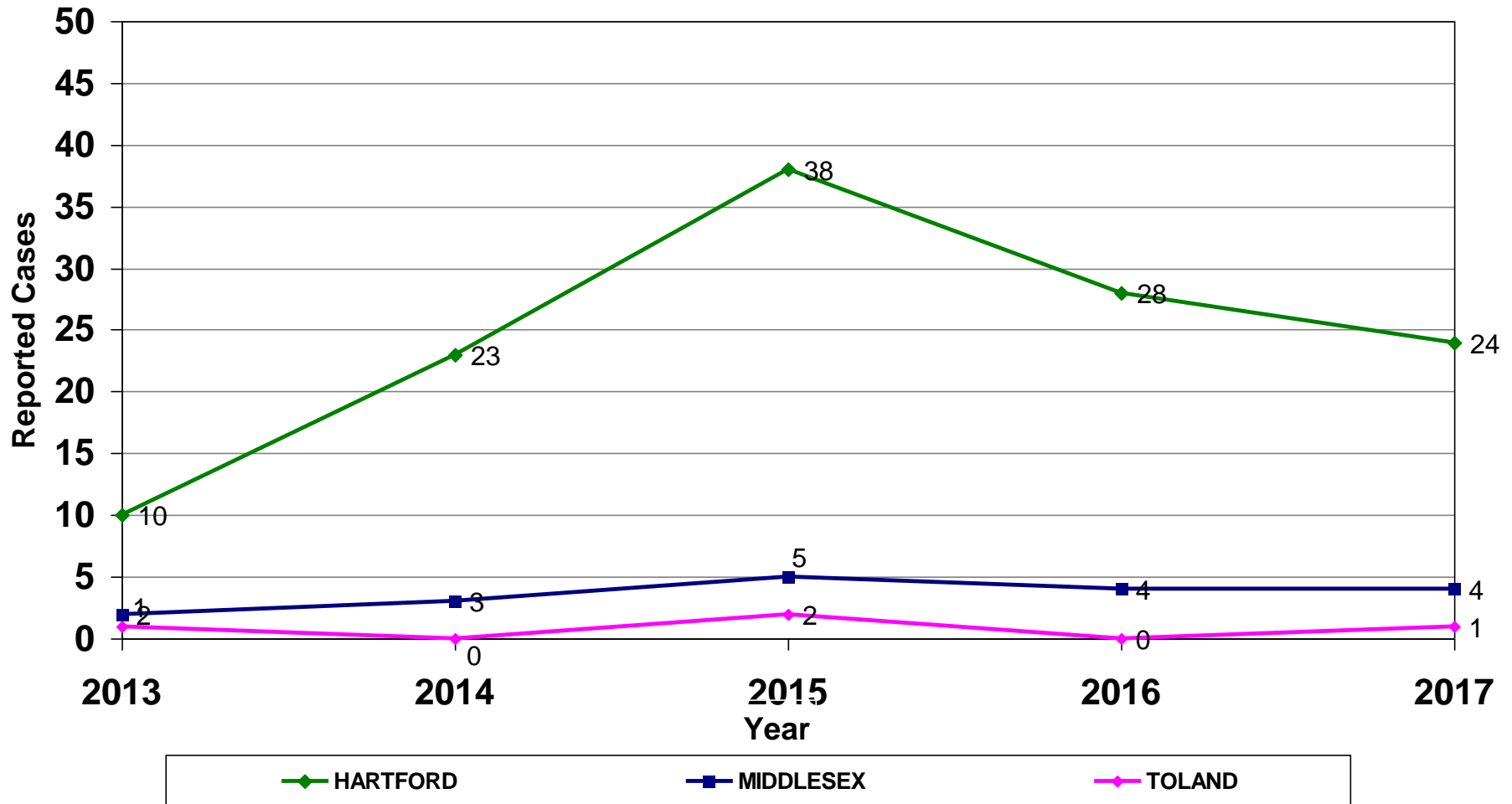
# Connecticut: Reported Primary & Secondary Syphilis Cases By Race/Ethnicity, 2013–2017

HARTFORD, MIDDLESEX AND TOLLAND COUNTIES



Source: CT STD Control Program

# Primary & Secondary Syphilis Cases By Selected County, 2013–2017

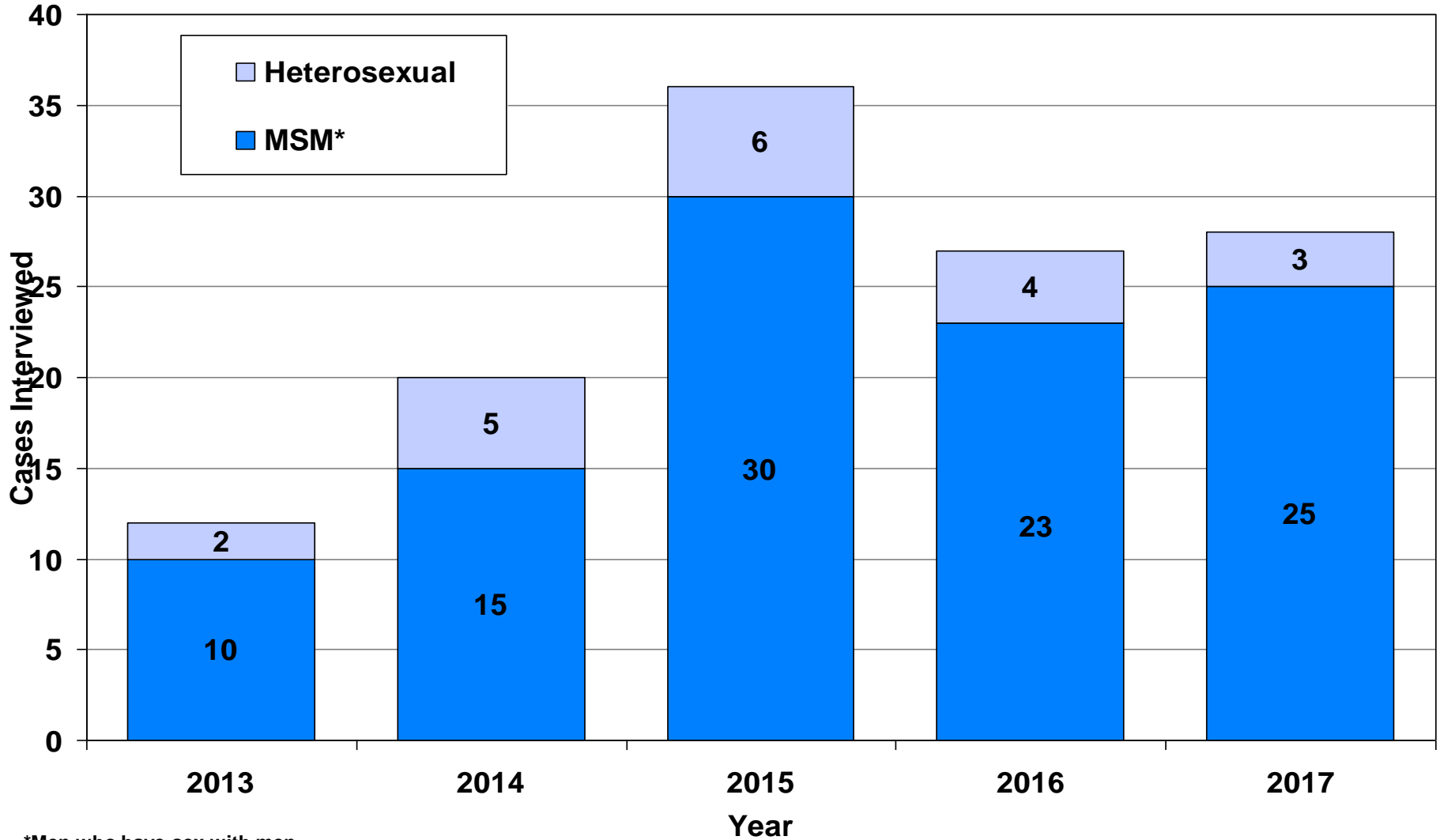


Source: CT STD Control Program



# Males With Primary & Secondary Syphilis By Sexual Orientation, 2013–2017

HARTFORD, MIDDLESEX AND TOLLAND COUNTIES

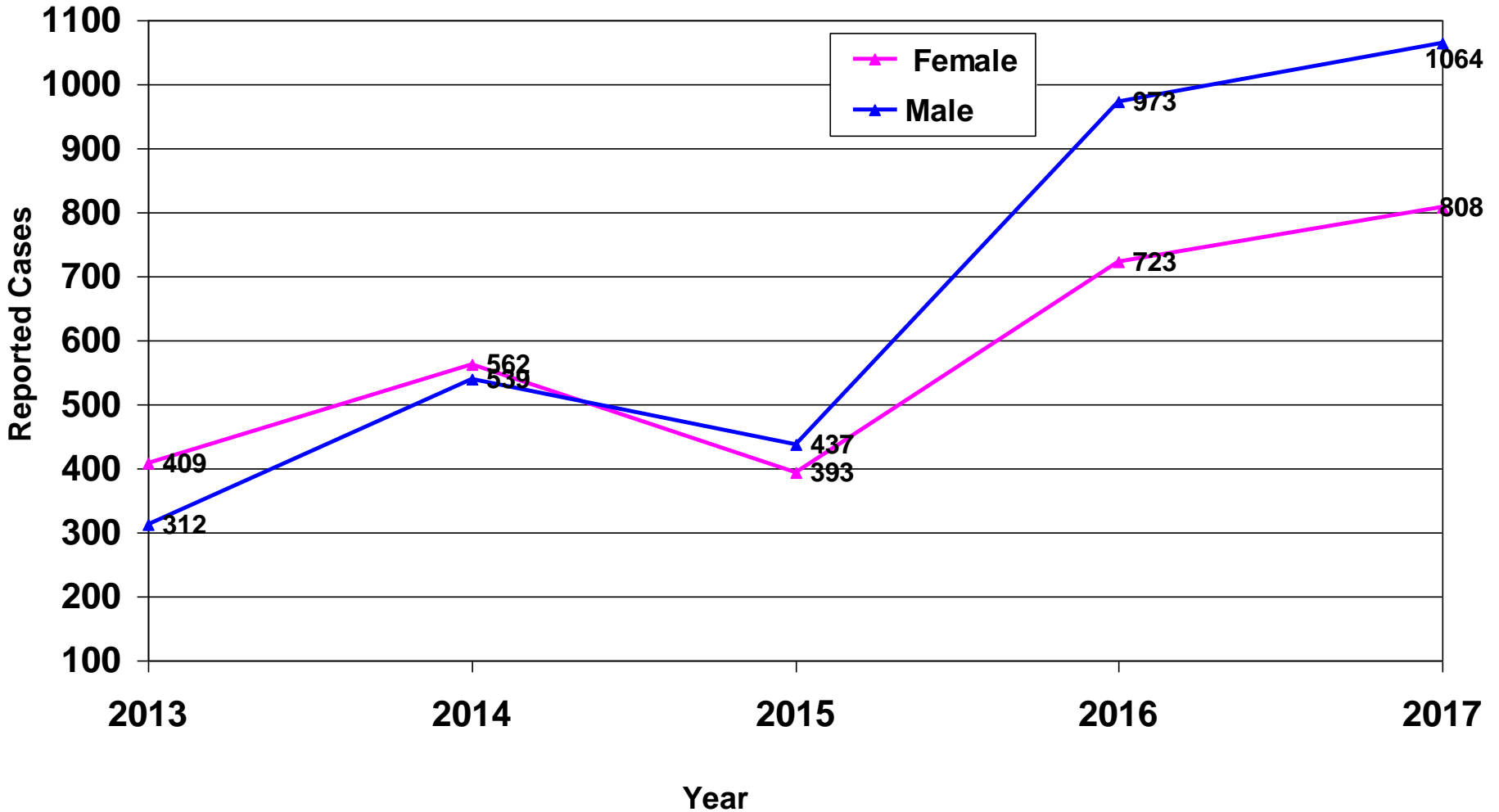


\*Men who have sex with men

Source: CT STD Control Program

# Reported Gonorrhea Cases By Sex, 2013–2017

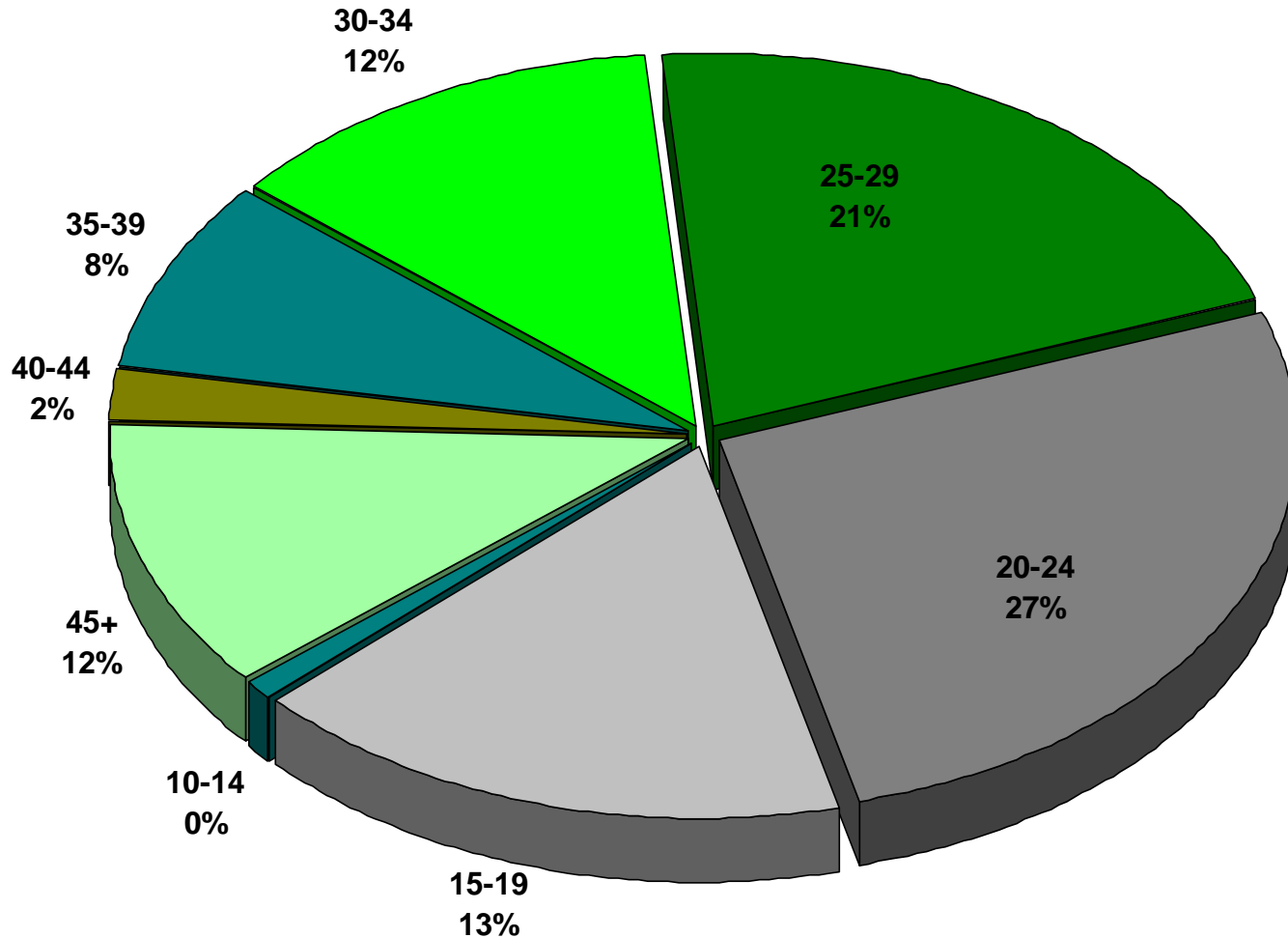
HARTFORD, MIDDLESEX AND TOLLAND COUNTIES



Source: CT STD Control Program

# Gonorrhea Cases By Percent of Age Group, 2017

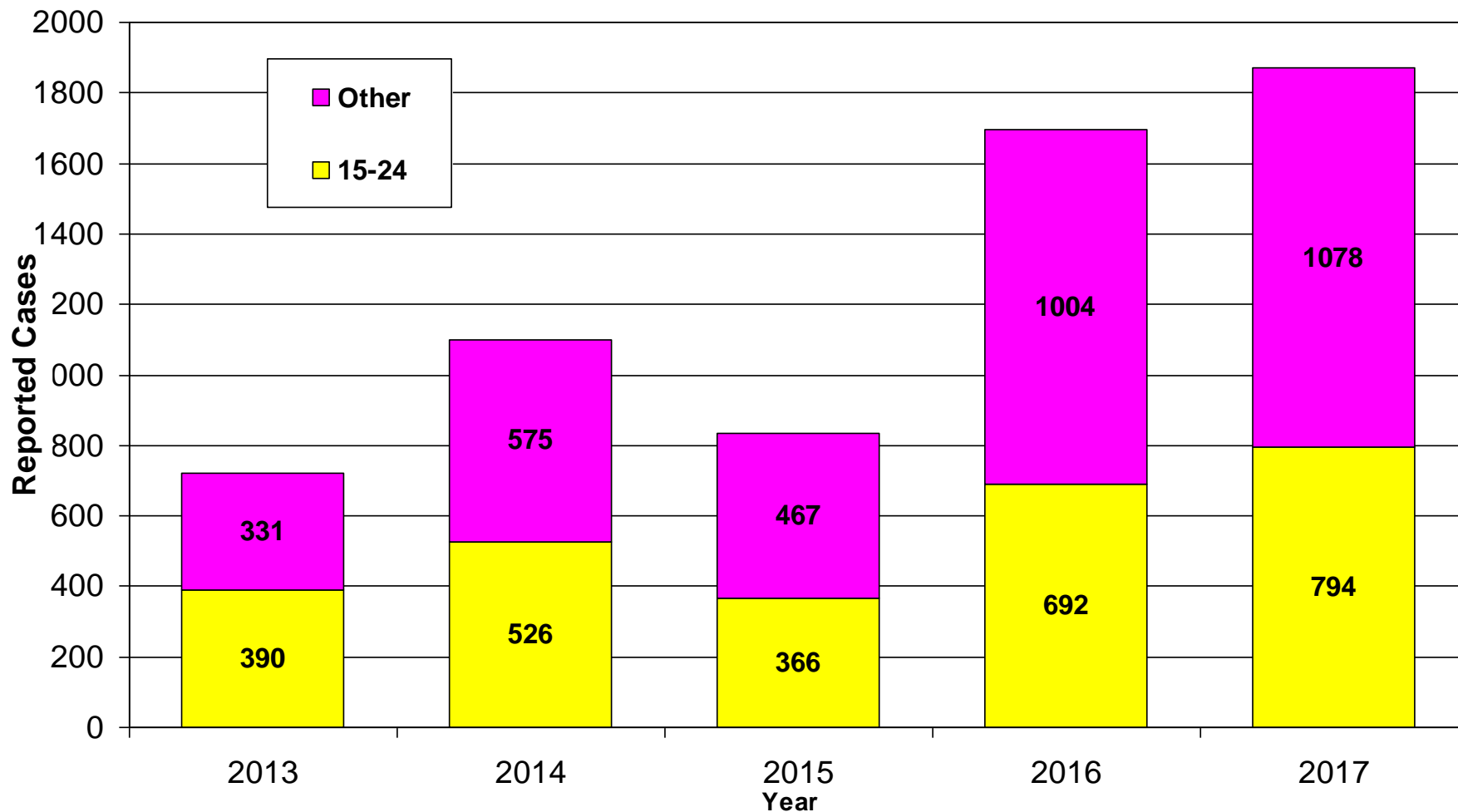
HARTFORD, MIDDLESEX AND TOLLAND COUNTIES



Source: CT STD Control Program

# Gonorrhea Cases Among 15–24 Year Olds, 2013–2017

HARTFORD, MIDDLESEX AND TOLLAND COUNTIES

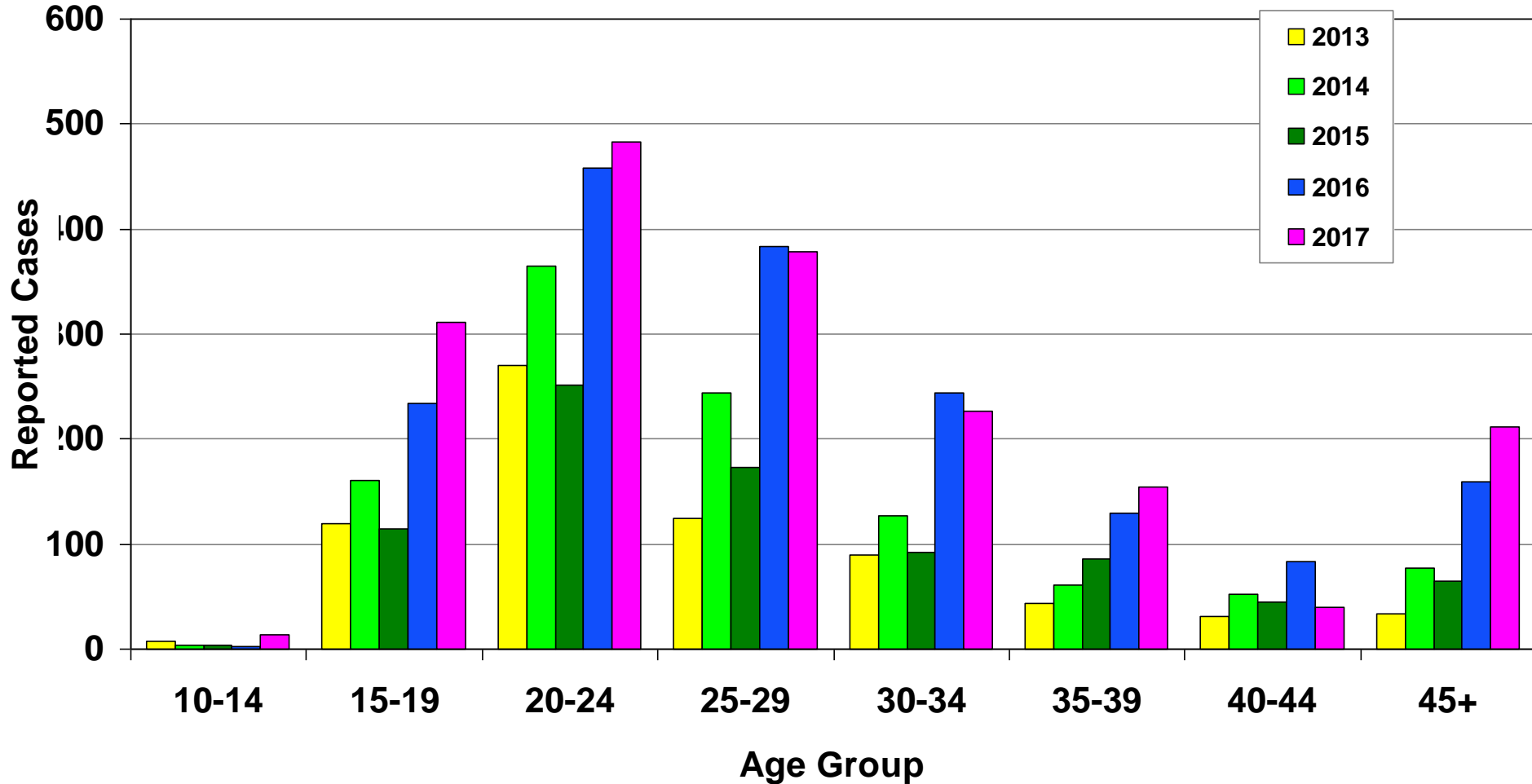


Source: CT STD Control Program

# Gonorrhea Cases

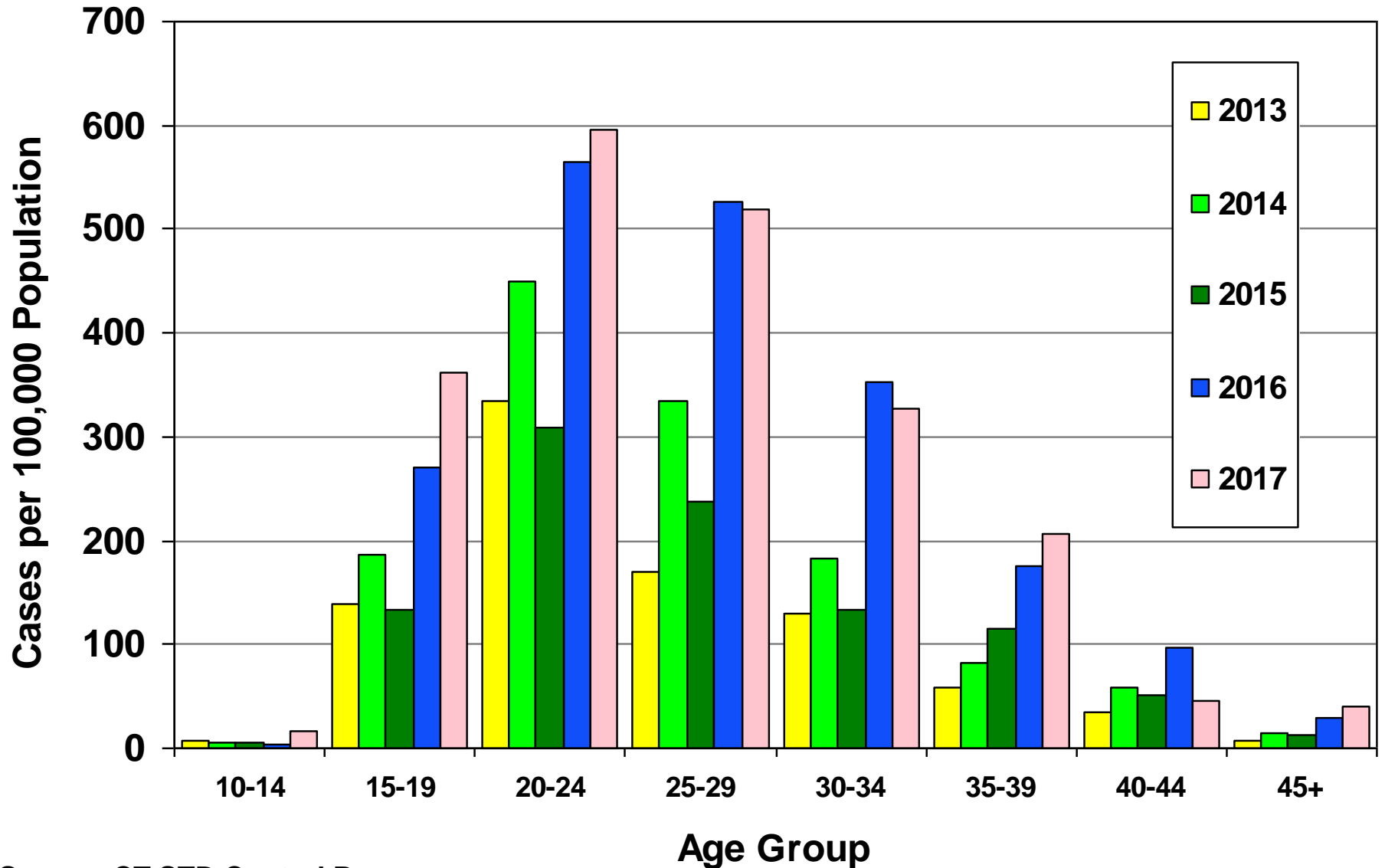
## By Selected Age Groups, 2013–2017

HARTFORD, MIDDLESEX AND TOLLAND COUNTIES



Source: CT STD Control Program

# Gonorrhea Case Rates for GH RW TGA By Selected Age Groups, 2013–2017

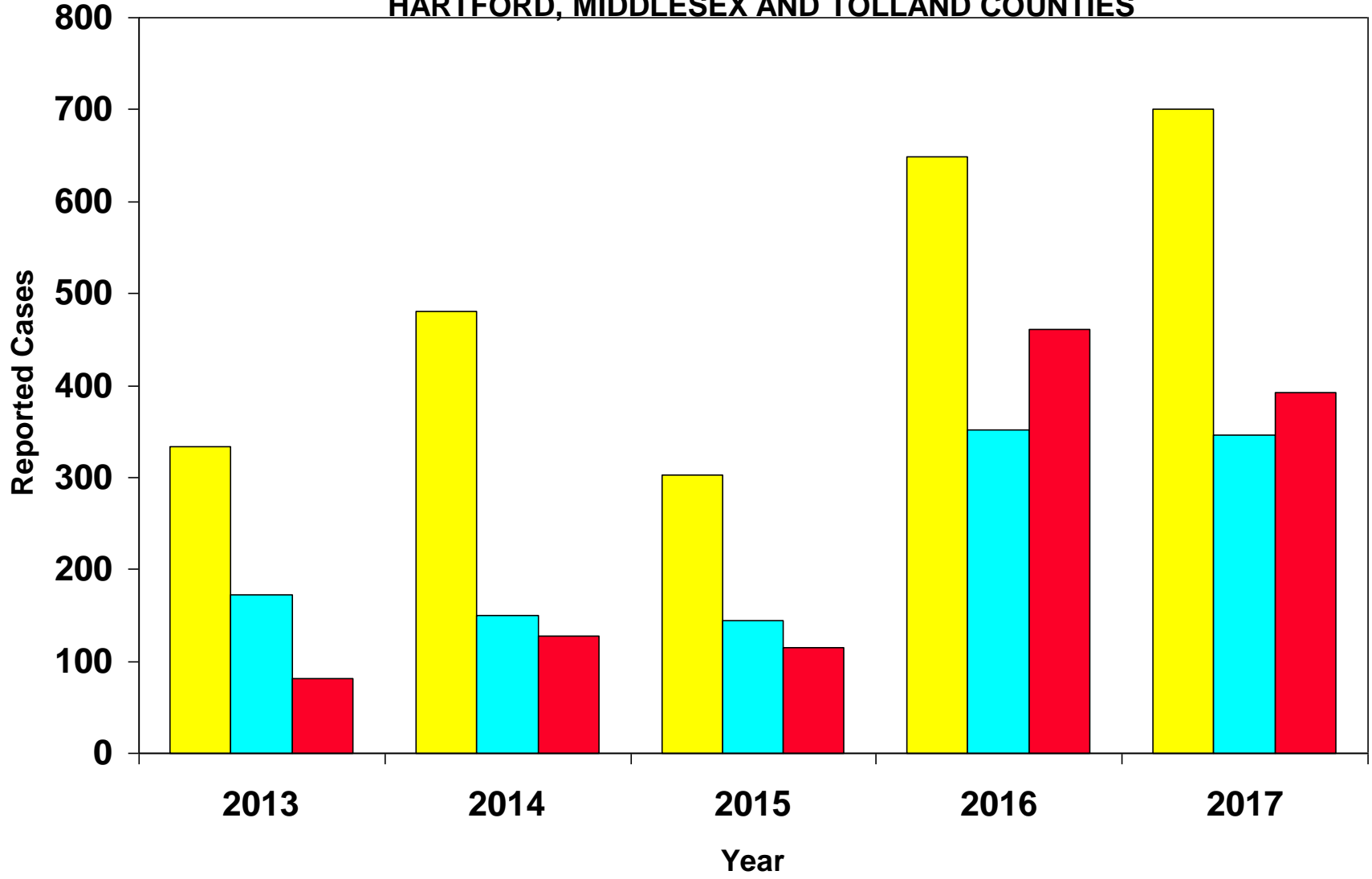


Source: CT STD Control Program

# Gonorrhea Cases

## By Race/Ethnicity, 2013–2017\*

HARTFORD, MIDDLESEX AND TOLLAND COUNTIES



\*28% Avg. Unknown Race/Ethnicity

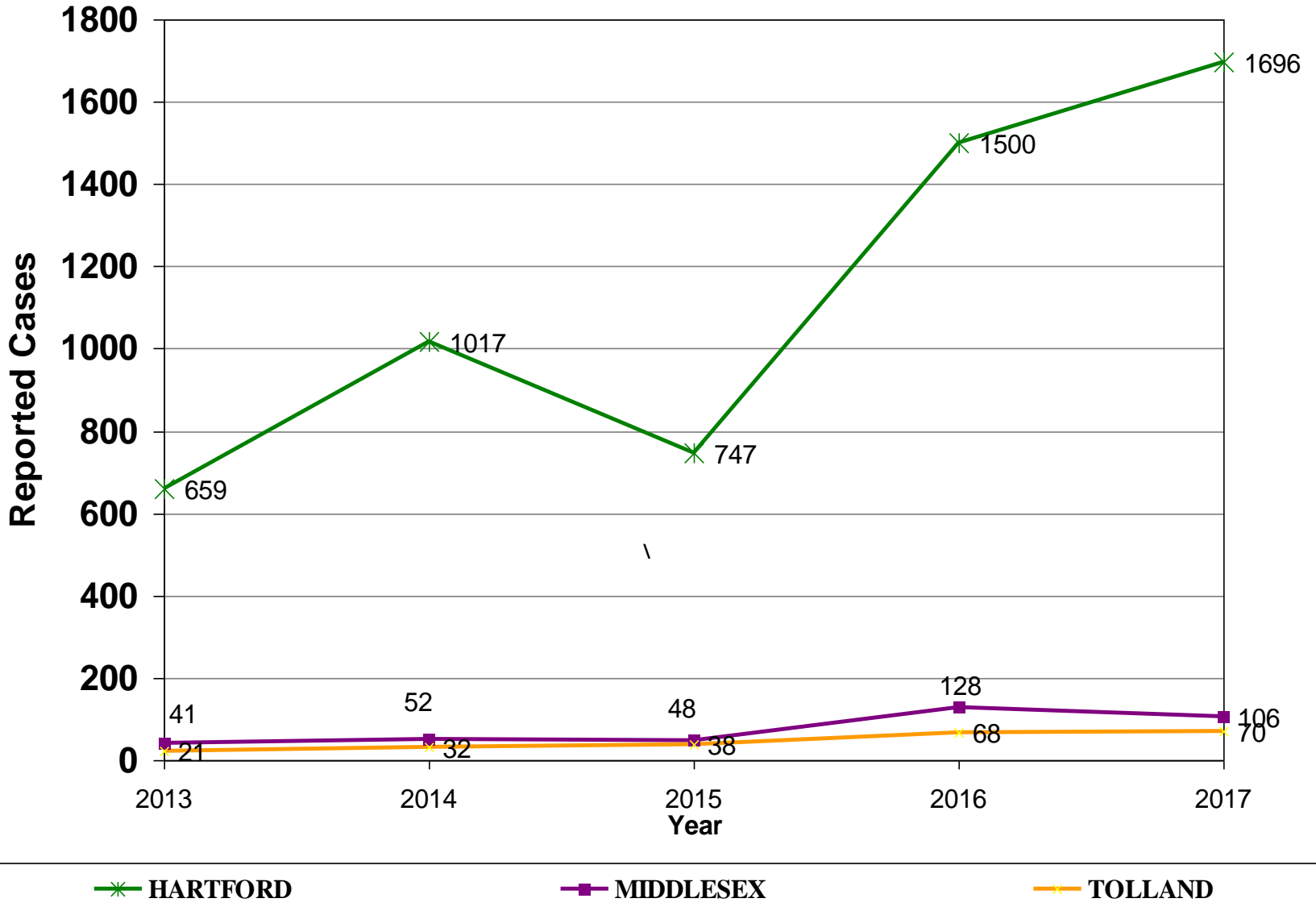


Source: CT STD Control Program

# Gonorrhea Cases

## By Selected County, 2013–2017

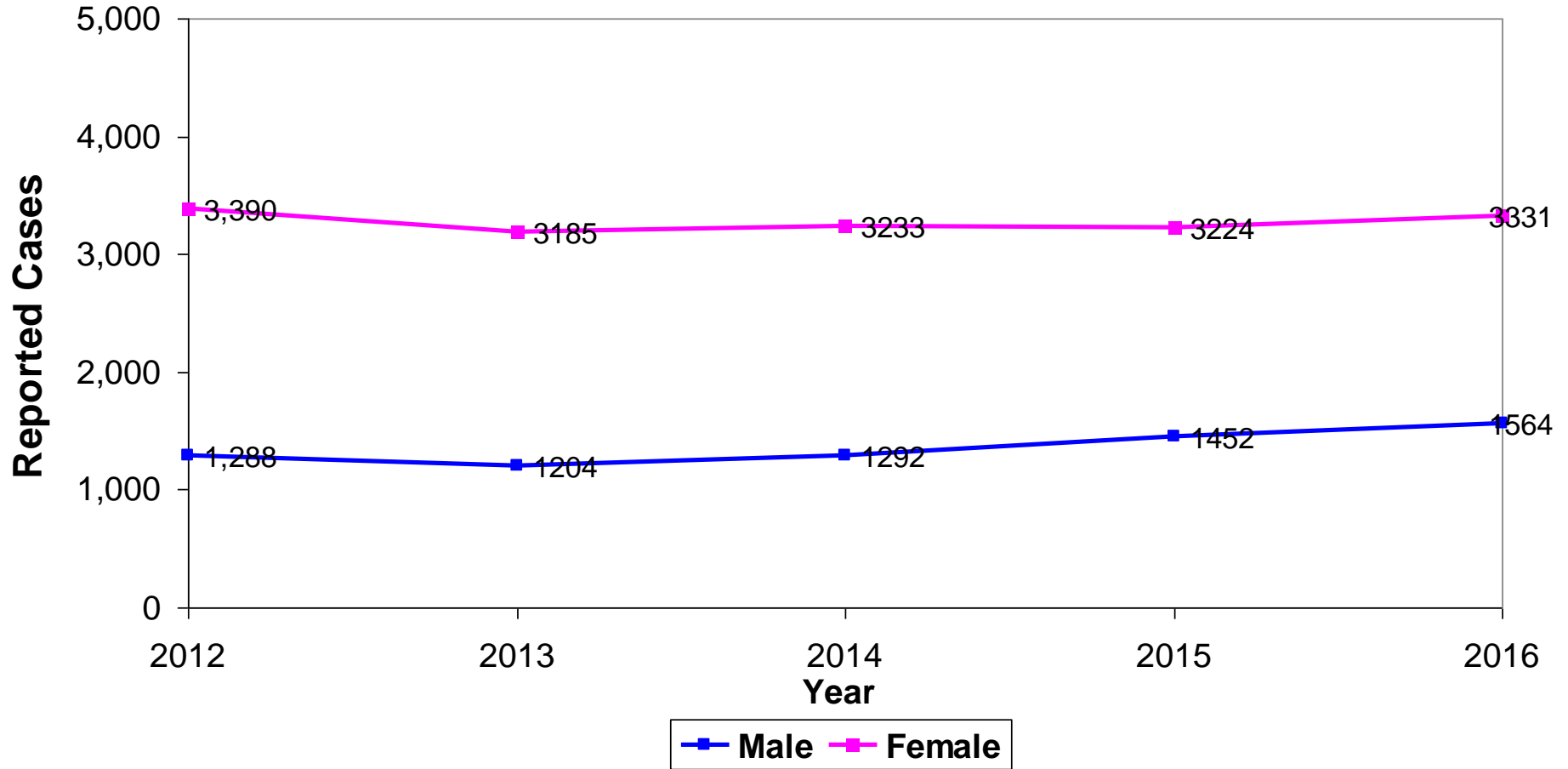
HARTFORD, MIDDLESEX AND TOLLAND COUNTIES





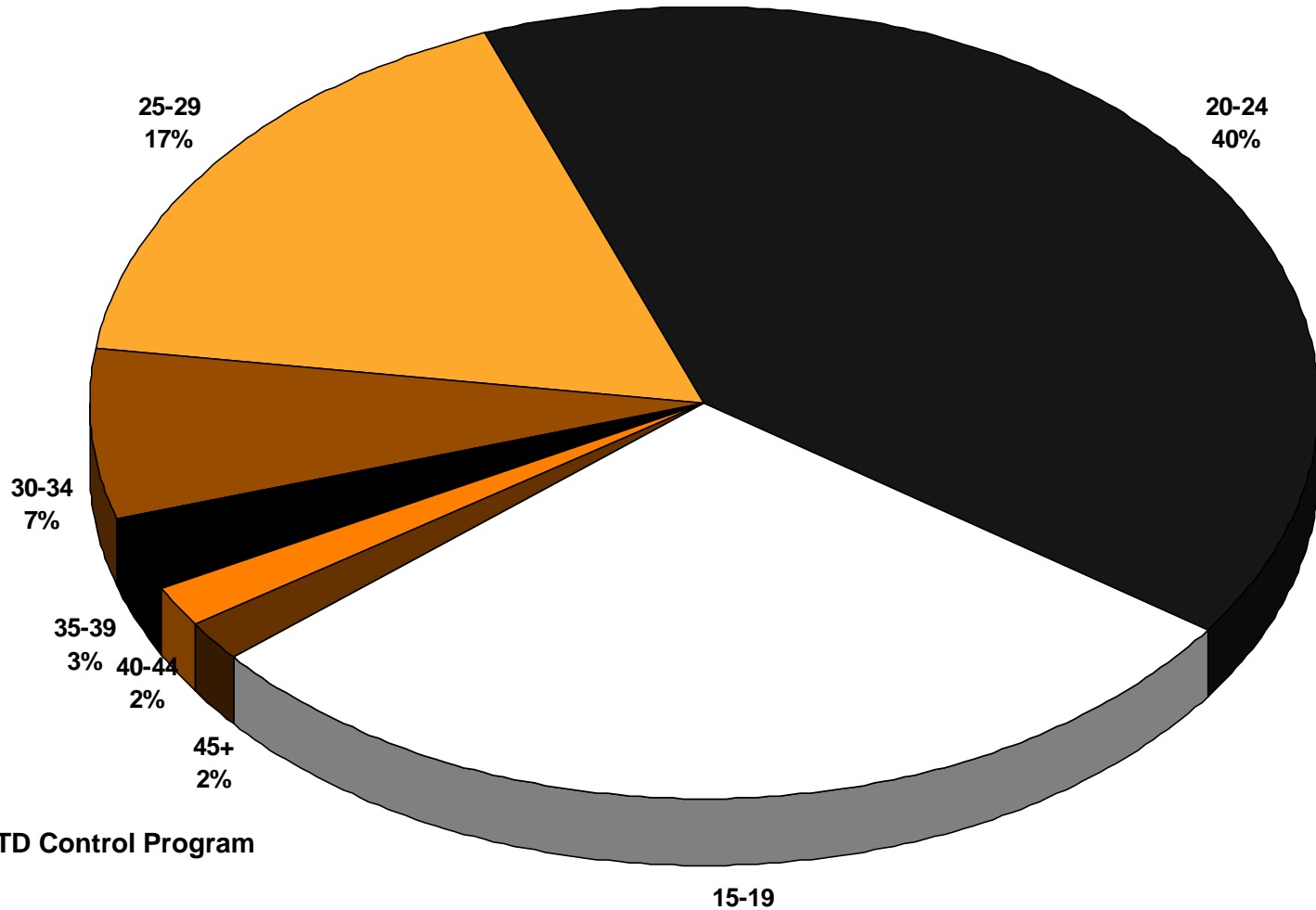
# Chlamydia Cases By Gender, 2012–2016

HARTFORD, MIDDLESEX AND TOLLAND COUNTIES



# Chlamydia Cases Percent By Age Group, 2016

HARTFORD, MIDDLESEX AND TOLLAND COUNTIES

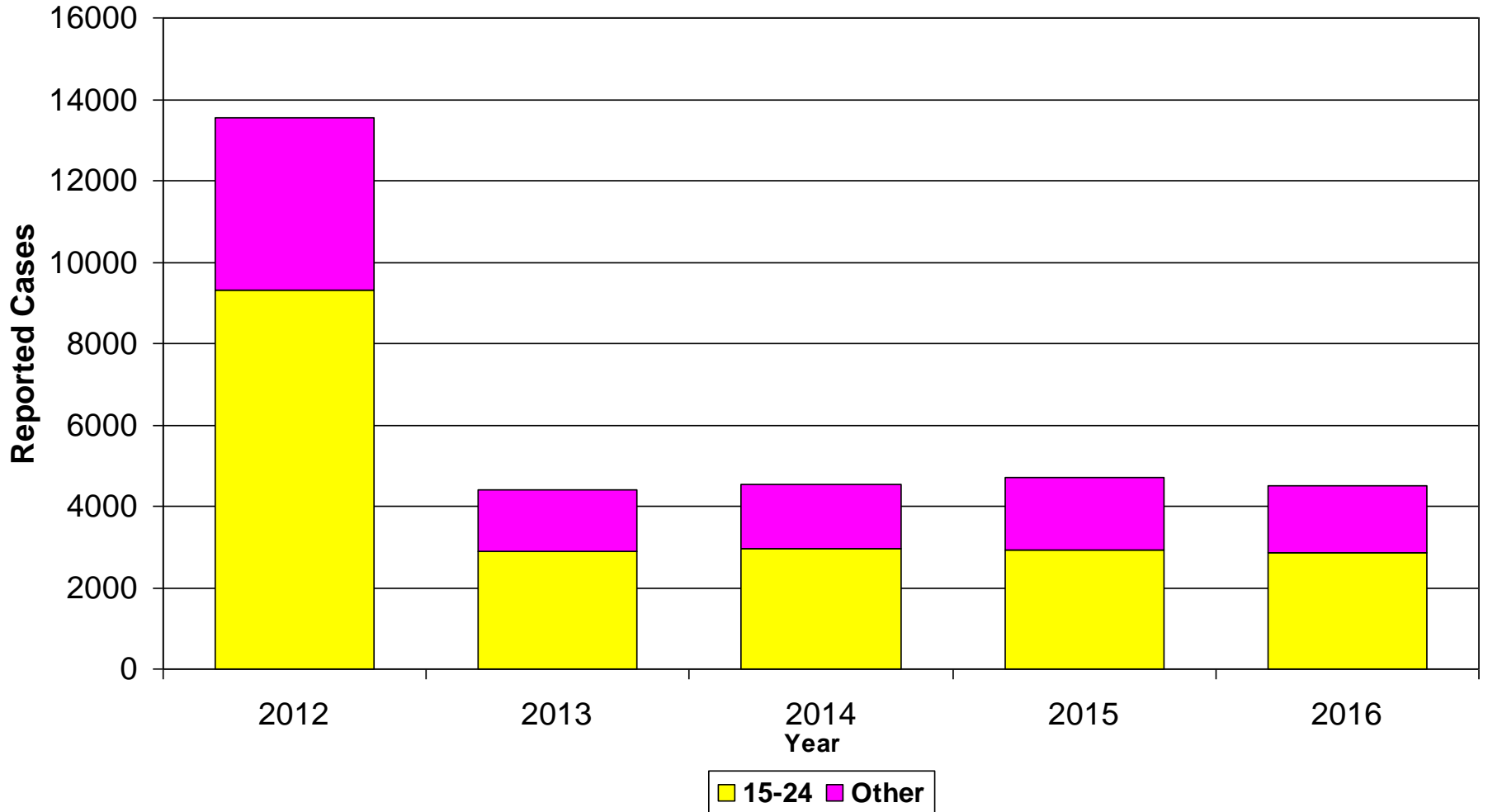


Source: CT STD Control Program

# Chlamydia Cases

## Among 15–24 Year Olds, 2012–2016

HARTFORD, MIDDLESEX AND TOLLAND COUNTIES

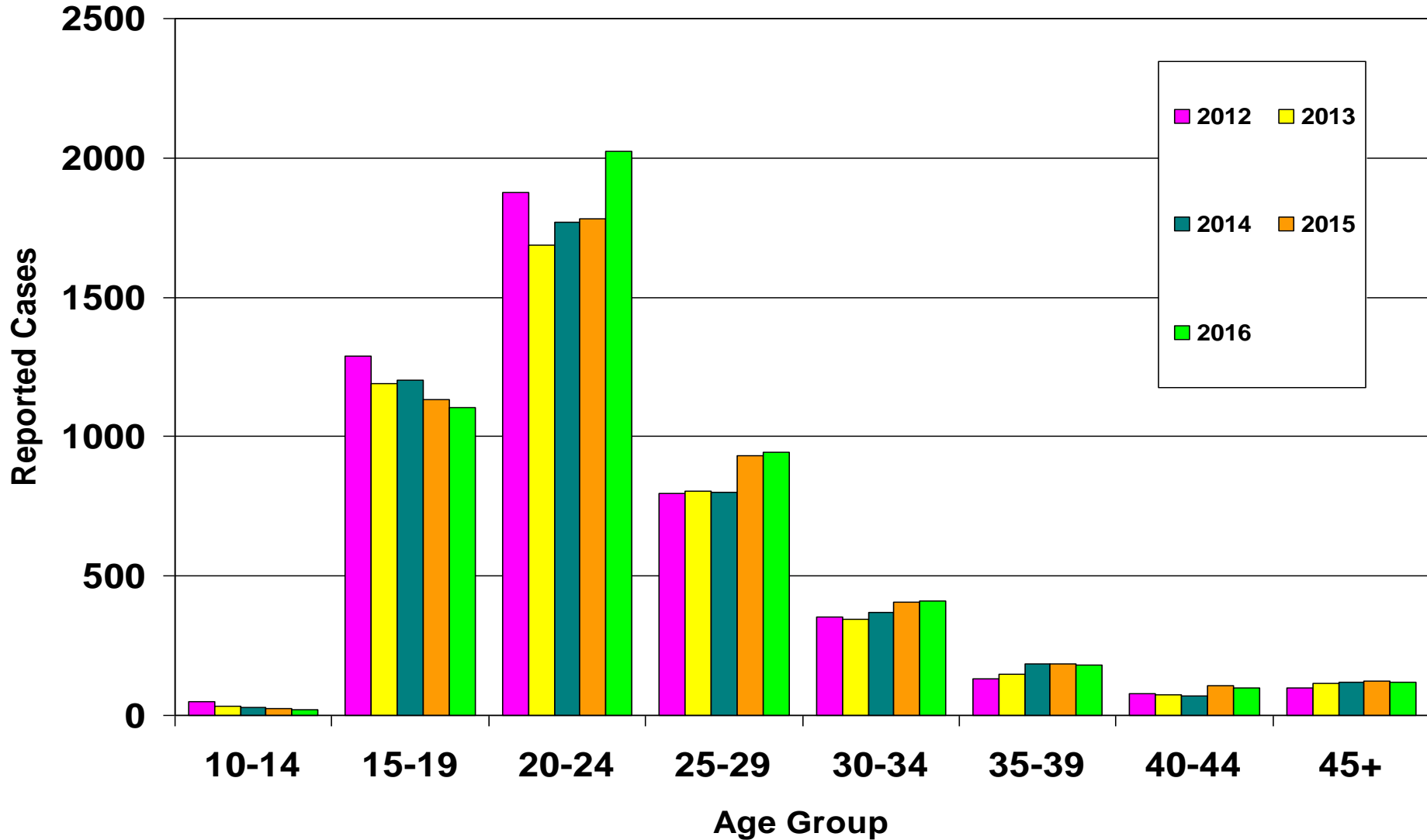


Source: CT STD Control Program

# Chlamydia Cases

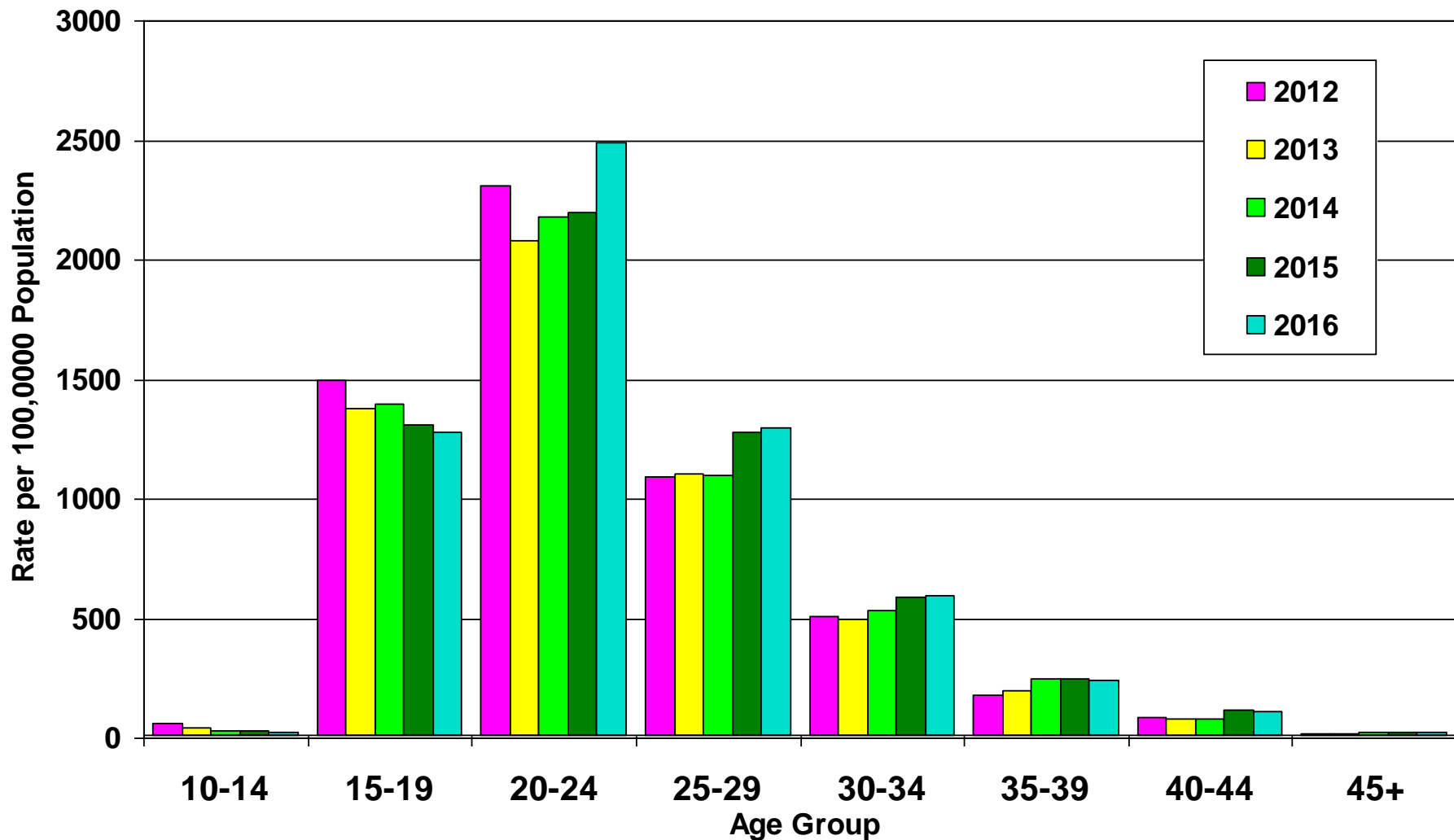
## By Selected Age Groups, 2012–2016

HARTFORD, MIDDLESEX AND TOLLAND COUNTIES



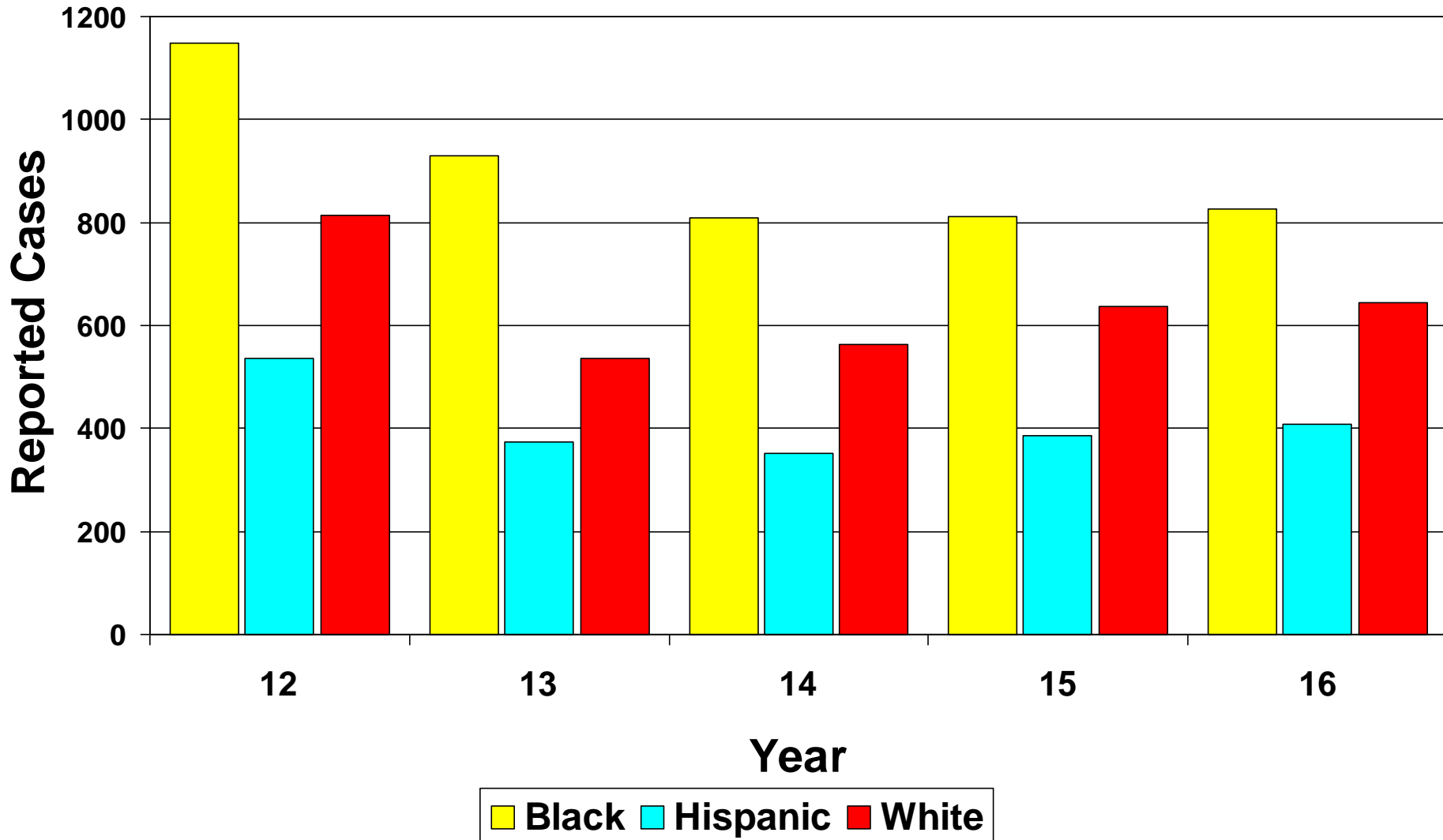
Source: CT STD Control Program

# Chlamydia Case Rates For RH RWTGA By Selected Age Groups, 2013–2016



# Chlamydia Cases By Race/Ethnicity, 2012–2016\*

HARTFORD, MIDDLESEX AND TOLLAND COUNTIES

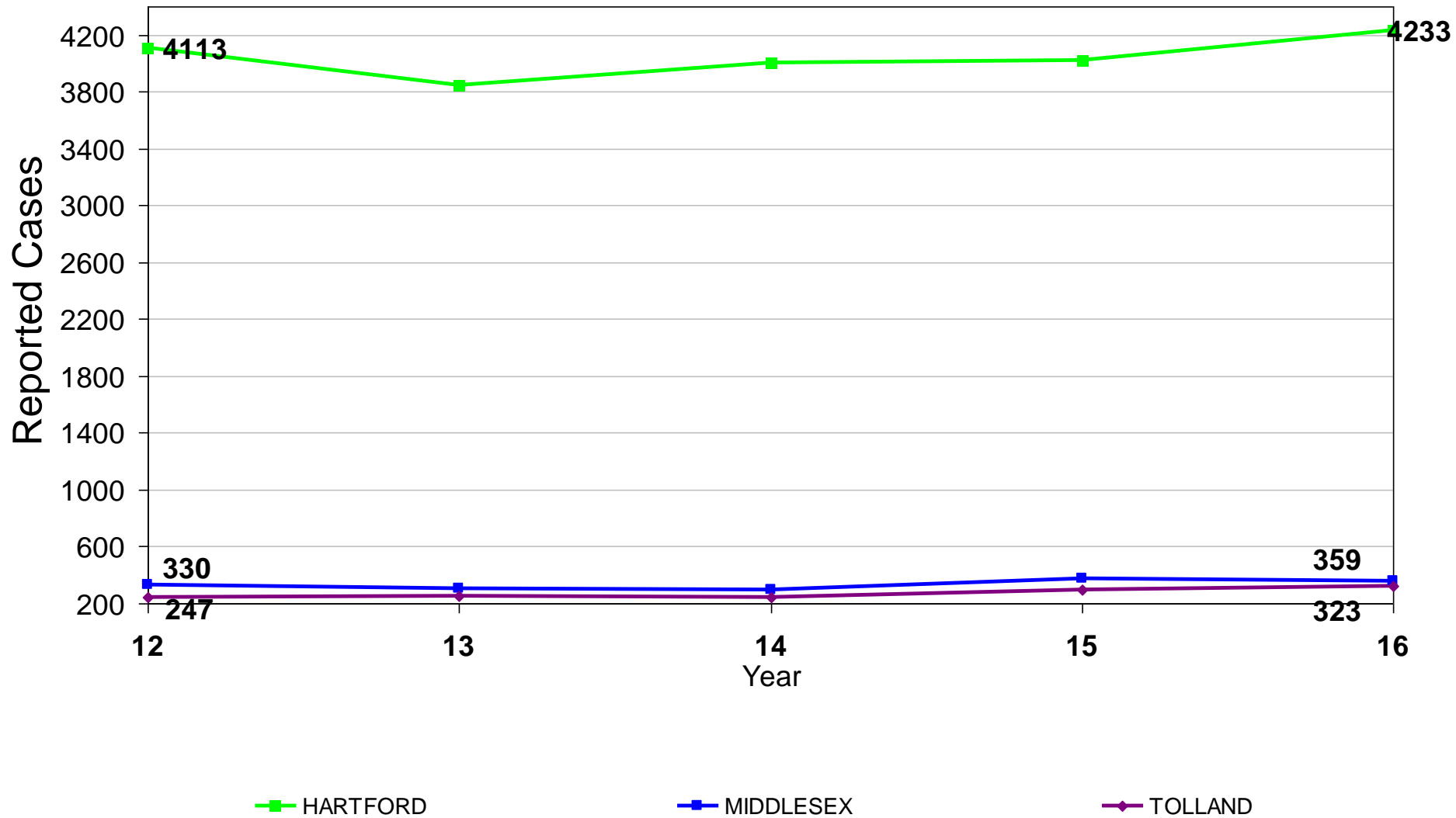


Source: CT STD Control Program: \* 69% race/ethnicity not reported

# Chlamydia Cases by Select Counties

## 2012-2016

HARTFORD, MIDDLESEX AND TOLLAND COUNTIES





The End